



NICKY BASFORD
Between Two Worlds

It is always exciting to see new work by Nicky Basford; she is a master of light and line. This new work, though, is more than exciting, it is exhilarating. Her mixed media & collage pieces – reflecting on subjects both near and far – are a revelation. They show us a fearless artist at the peak of her powers making beautiful, complex images that have the intellectual quality and intricate, flowing patterns of a Piranesi landscape. When I look at these new paintings, I can feel the presence of the artist. It is as if she is standing beside me. No more so than with the incredible *Between Memory and Loss, Hope (Sunflowers)*, a magnificent work that radiates with colour and energy, hope and joy. I love it. I love it all.

Will Gompertz

It is almost twenty years since I last wrote about Nicky Basford's work. That was, however, far from being the last time I thought about it and engaged with it. Nicky's work has become something of a touchstone as I look back through the many artists and exhibitions with which I have been involved during that time. I have always been drawn to what is often described as 'abstracted landscape', but only where it also contains the mind and spirit of its maker. To me, Nicky's work expresses the essence of her chosen subject through the prism of her soul.

Her paintings express a love, passion and quiet confidence that gives them the requisite wings to transcend the prosaic and fly free. The paintings in this exhibition display a new depth and dimension, perhaps informed by the artist's increasingly confident use of collage, which underpins the delightful gem-like *I Was Here* series and the evocative paintings of Battersea Park.

I once described the beguiling light that Nicky captures in her work as 'redemptive'. I think that I was struck particularly by her ability to conjure the effects of light without it always being clear exactly where the light is coming from or where it is going to. It just ambiguously is, offering hope to anyone who cares enough to look for it. Nicky's colours and tones have become richly varied, characteristically harmonious, and distinctively hers.

The two larger paintings *Between Two Worlds I* and *Between Two Worlds II* contain echoes of much of Nicky's work stretching back over the past twenty years, but they are also clearly on the brink of something new. There is a moving contrast between the clarity of the past, the uncertainty of the present, and the opacity of the future. Her usual exuberant colour has given way to darker greens and blues punctuated with unresolved blacks that slightly elude definition. But there are also joyous sparks of hope, and that beautifully ambiguous light of possibility that has pervaded Nicky's life, work and spirit in the time I have been lucky enough to be her friend.

Richard Blackborow (extract)

A personal note

Working primarily in mixed media (acrylic, pencil, oil pastel, charcoal and collage), I am interested in layers and transparency. What's seen and not seen. The transience, beauty and fragility of things.

This show includes work made in Moclin, a small town outside Granada in Andalusia; in Aldeburgh whilst on an artist's residency at the Beach Lookout; a series made about Battersea Park with its Henry Moore sculpture and a collection made during lockdown in my mother's Sussex garden and the woods & hedgerows surrounding it.

A growing appreciation of simply being here and taking the time to notice little things, especially in nature, has informed this body of work. I was particularly struck by a quote from St David, I believe his last spoken words, seen on a plaque in the eponymous cathedral, "be joyful, keep the faith and do the little things".

Biography

Nicky studied at Chelsea, Camberwell and Newcastle Schools of Art and after a career in art and retail, returned to full time painting in 2001. She has exhibited widely including at the Royal College of Art, Royal Watercolour Society, Toronto Art Fair, Affordable Art Fair, 20/21 Art Fair, Belgrave St Ives, Penhaven Gallery St Ives, Brian Sinfield Gallery, Cricket Fine Art and the Chelsea Arts Club. This will be her eighth solo show.

Front Cover: Between Memory & Loss, Hope (Sunflowers) Acrylic 60 x 84cm

A percentage of all profits will be donated to the MNDA.

All works are available for sale from receipt of this catalogue. Please note not all works are illustrated in the catalogue and that the full range can be seen at www.nickybasford.co.uk

© Nicky Basford 2024

NICKY BASFORD

Between Two Worlds



I Was Here (Suffolk Marshes, blue & orange) *Mixed media with collage* 10 x 20cm

13 – 18 May 2024

Coningsby Gallery

30 Tottenham Street, London W1T 4RJ

Mon – Fri 10am – 6pm Sat 11am – 1pm T 07776 138737 E nickybasford@gmail.com

www.nickybasford.co.uk @nicky_basford



Sunburst (Towards Granada) *Mixed media with collage on canvas* 40 x 50cm



The Light Will Find You *Mixed media on canvas* 40 x 50cm



Space to Breathe Mixed media on canvas 50 x 70cm



Flora *Mixed media on canvas* 70 x 50cm



Land of Alcazars I *Mixed media with collage on paper* 30 x 40cm



Sunburst & Shadow *Mixed media with collage on paper* 30 x 40cm



Cypress Trees *Mixed media with collage on paper* 30 x 40cm



Land of Alcazars II *Mixed media with collage on paper* 30 x 40cm



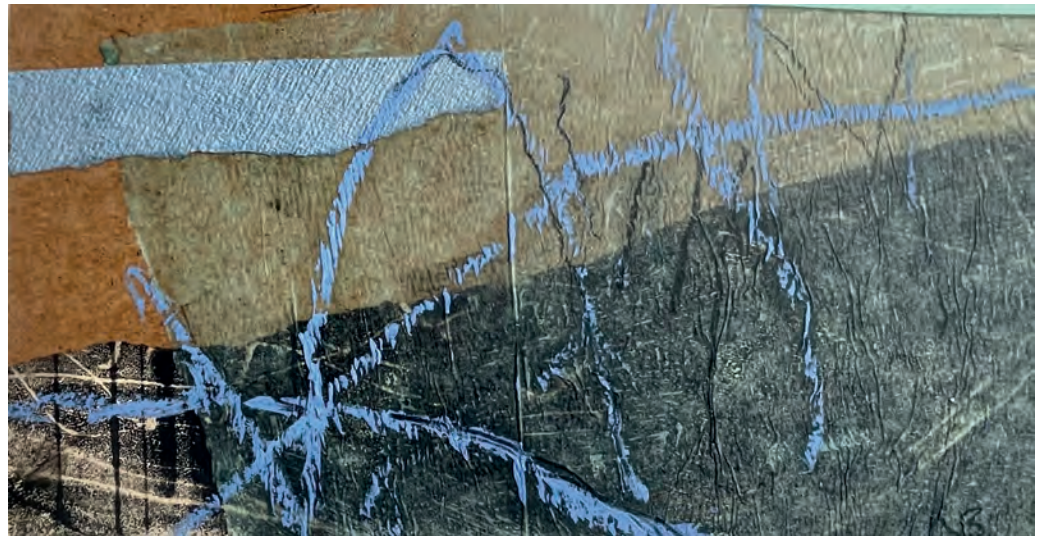
Between Two Worlds I | *Mixed media on canvas* 50 x 100cm



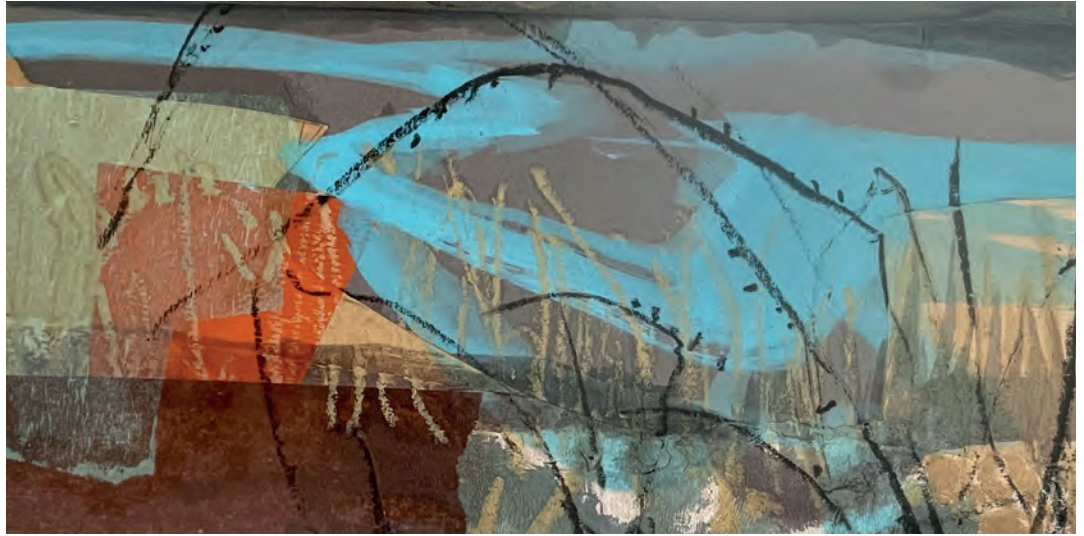
Between Two Worlds II *Mixed media on canvas* 50 x 100cm



I Was Here (Suffolk Marshes – pink) *Mixed media with collage on board* 25 x 50cm



I Was Here (Suffolk Marshes – blue & grey) *Mixed media with collage on board* 10 x 20cm



I Was Here (Suffolk Marshes – blue) *Mixed media with collage on board* 25 x 50cm



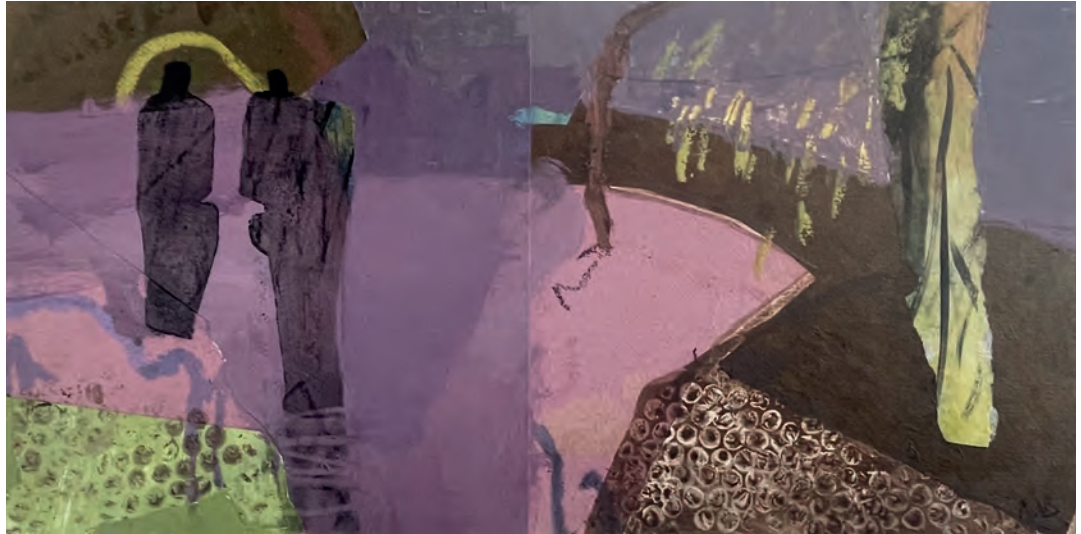
I Was Here (Suffolk Marshes – silver & gold) *Mixed media with collage on board* 10 x 20cm



Sentinels (Henry Moore Sculpture, Battersea Park) *Mixed media with collage* 25 x 50cm



Henry Moore Sculpture, Battersea Park *Mixed media with collage* 20 x 40cm



The Space Between Us (Henry Moore Sculpture, Battersea Park) *Mixed media with collage* 25 x 50cm



Sycamore Key, Battersea Park *Mixed media with collage* 20 x 40cm



Hedgerow, Dusk *Mixed media with collage* 36 x 60cm



Hard Frost *Mixed media* 40 x 53cm



I Was Here (Suffolk Marshes – green) *Mixed media with collage on board* 10 x 20cm



Shards of Light *Acrylic on board* 25 x 50cm



Yellow Mountain *Mixed media with collage* 26 x 42cm



Bouncing Light *Acrylic on board* 25 x 50cm



Joie de Vivre *Mixed media* 38 x 48cm

Coningsby Gallery
30 Tottenham Street, London W1T 4RJ

T 07776 138737 E nickybasford@gmail.com
www.nickybasford.co.uk @nicky_basford